

# DURA 100



## Description

The Verderflex Dura 100 Hose Pump is designed for applications such as metering, dosing and transfer duties with a focus on sludges, slurries and abrasives.

## Your benefits

- Class leading performance up to 55m<sup>3</sup>/hr and pressures of up to 16 bar
- Minimised downtime and reduced cost of ownership
- In-situe hose change/simplified spares holding requirement
- Self-priming (capable of a suction lift of 9.5 mwc), dry running
- Low shear design ideal for abrasive/solid slurries
- Seal less and valveless pumping operation with directly proportional flow stability and repeatability

## Technical data

Max. flow rate (m <sup>3</sup> /hr)	55
Max. pump speed (rpm)	50
Max. discharge pressure (bar)	16
Max . suction lift (mWc)	9.5
Max. motor power (kW)	22
Max. temperature of medium (°C)	100 <sup>1)</sup>
Hose ID (mm)	100
Bareshaft weight (kg)	1140 <sup>2)</sup>
Max. incompressible solid size (mm)	10
Max. compressible solid size (mm)	25

1) Materials of construction apply such as hose and lube

2) Assembled - approx. 1560kg depending on the gearbox and motor fitted

## Materials

Description	Materials	Options	Paint detail
Pump housing	SG Iron		Green powder coated
Front cover	Steel		Black powder coated
Window	Plexyglass		
Rotor	SG Iron		Green powder coated
Rotor shoes	Cast aluminium	Stainless steel material	
Mounting frame	Steel		Black powder coated
Hose options	Natural Rubber (NR)	Nitrile Buna Rubber (NBR), Ethylene Propylene Diene Monomer (EPDM), food grade Nitrile Buna (NBRF) and Hypalon® (CSM)	
Port flange	CF-8M (316) stainless steel universal slotted design - fits with DIN PN16 DN100, ANSI 150# 4" & 100 - JIS10K	316 stainless steel with polypropylene or PVDF insert <sup>3)</sup>	
Lubricant options	Verderlube - glycerine based lubricant <sup>4)</sup> Verdersil - silicone based lubricant <sup>5)</sup>		

3) Temperature limit for PP insert is 40 °C and for PVDF insert is 80 °C.

4) Temperature limit for Verderlube is 50 °C.

5) Suitable application above 50 °C but subject to maximum temperature limit of the hose and applications involving strong oxidising agents and nitrogenous compounds.

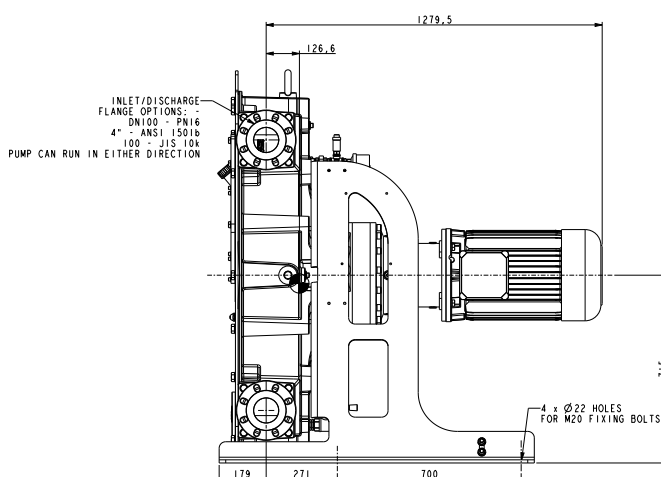
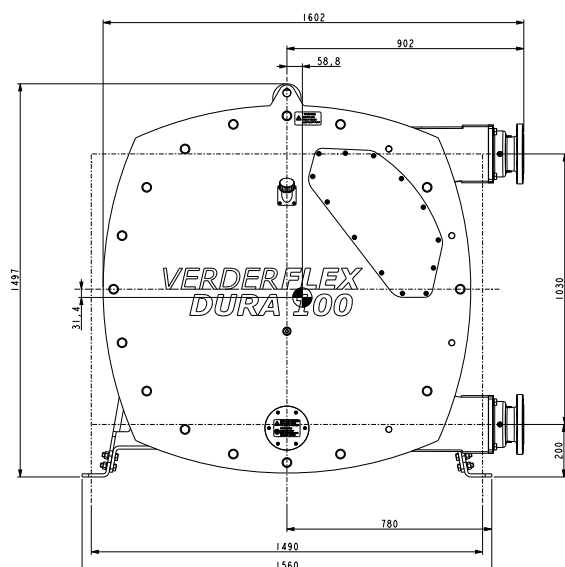
# DURA 100



## Options and accessories

- Optional hose: FDA CFR21 and EC/1935.
- Ball valve on drain port.
- Angled metal filling port for lubricant.
- Service access port on bottom of front cover.
- Lifting point for front cover.
- Lubricant level gauge (optional).

## Dimensions



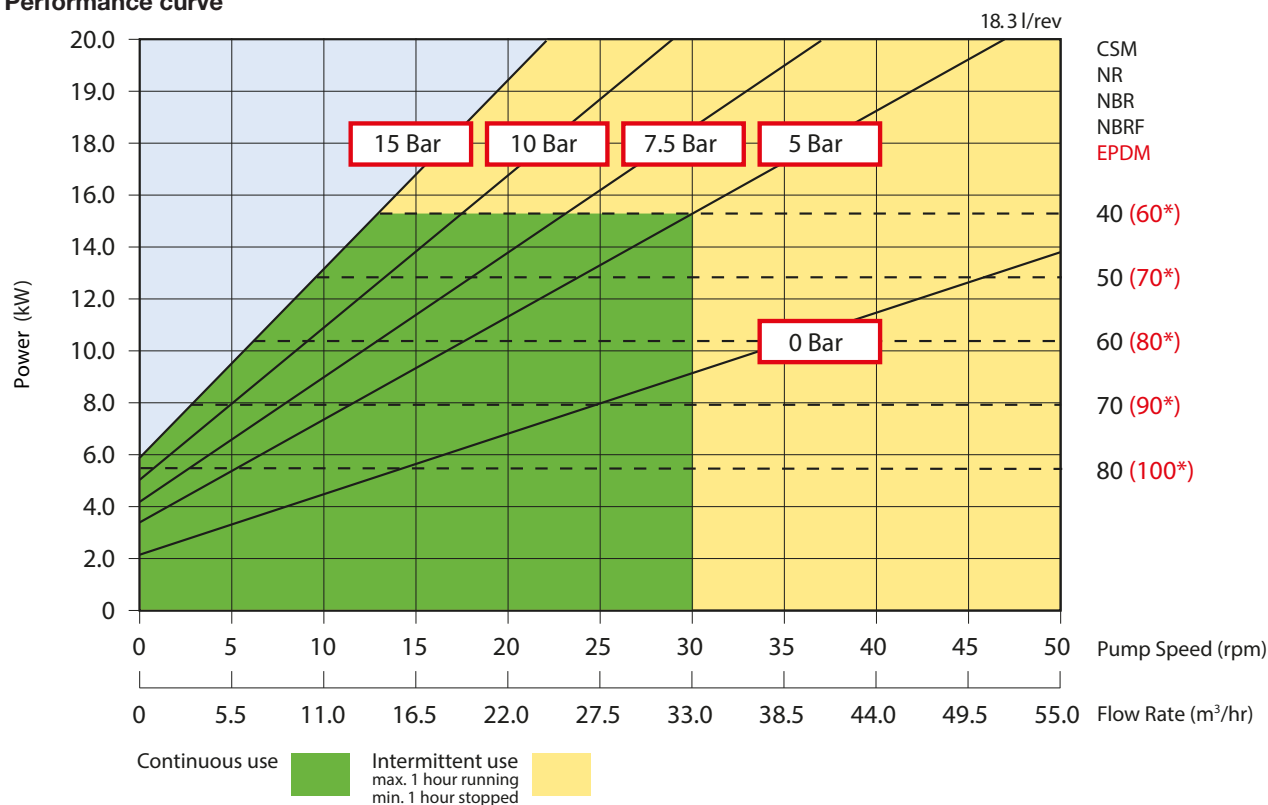
All dimensions are in mm.

All dimensions and weights are for guidance only.

# DURA 100



Performance curve



Flows are typical and were measured with water at 20 °C with flooded suction. Actual flows will vary according to suction conditions, discharge pressure and normal component production tolerances.

## Trademarks

VERDERFLEX® is a registered trademark of VERDER LIQUIDS B.V. No permission is granted to use any VERDER trademarks or trade names included in this document without the prior written agreement of VERDER LIQUIDS B.V. Tri-clamp® is a registered trademark of Alfa Laval Corporate AB. Hypalon® is a registered trademark of RSCC Wire & Cable LLC.

Find your local supplier at [www.verderliquids.com](http://www.verderliquids.com)

For construction, installation and floor mounting drawings please contact your local authorised VERDERFLEX distributor.

A VERDER BRAND