



## Industries and application areas

The Verderflex Ds4F Cased Drive Pump is designed to deliver unparalleled performance, reliability, and efficiency in a wide range of water treatment, industrial and chemical applications. This cutting-edge pump is engineered with advanced technology to meet the evolving needs of industries that demand robust and efficient pumping solutions. Its cased drive design ensures enhanced durability and protection against environmental factors, making it ideal for challenging operational conditions.

UL and EU certified, the Ds4F offers significant commercial and technical advantages. Extensive testing by skid builders and OEM customers, among others, has demonstrated its success in harsh environments. Their feedback highlights the pump's reliability and effectiveness in environmental waste management, lithium-ion battery recycling, municipal waste, and industrial water facilities.



Lithium-ion  
battery recycling



Environmental  
waste management



Municipal  
water facilities



Waste water  
facilities



Industrial water  
facilities

## Unparalleled versatility with various tube elements



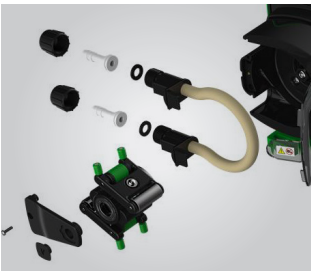
Verderprene  
(FDA and NSF61)



Verderchem  
(chemical applications)



Various tube  
diameters



Quick change  
tube elements

### Verderflex Ds4F

The new Verderflex Ds4F, cased drive, peristaltic pump accurately doses liquids for industries ranging from the aseptic, pharmaceutical environment to the harsh requirements of water treatment and mining.



Ds4F	
Max. flow [ml/min]	5 - 4000 (up to 1,057 gpm)
Max. discharge pressure [bar / PSI]	4 / (0 - 60 psi)
Accuracy [%]	up to ± 1
Speed [rpm]	1 - 220
Max. temperature of pumped medium [°C / °F]	85 / 185
Turn down ratio	5000:1
Control options [mA]	4 - 20
Protection class/IP rating	IP66 (NEMA Type 4X)

VERDER LIQUIDS

The leading  
pump  
manufacturer

VERDER LTD  
Unit 3 California Drive  
Castleford - WF10 5QH  
United Kingdom

TEL +44 (0)1924 221 020  
FAX +44 (0)1132 465 649  
MAIL info@verder.co.uk  
WEB www.verderliquids.co.uk

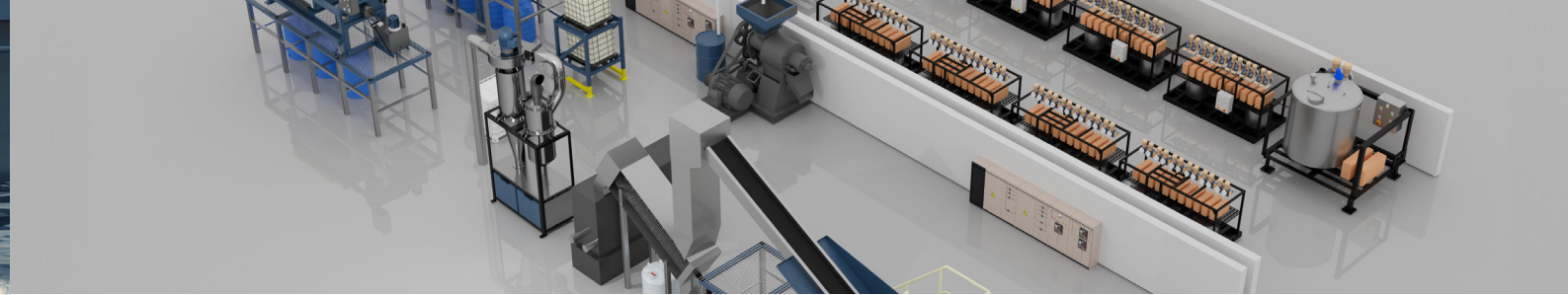
# VERDERFLEX Ds4F

The groundbreaking  
cased drive pump



- ✓ Advanced touch screen controls
- ✓ Intuitive, easy to follow menus
- ✓ Quick change tube elements






# Introducing the groundbreaking new **Verderflex Ds4F** cased drive pump

The Ds4F is the next generation pump and a groundbreaking expansion of the Verderflex cased drive range. This pump combines the advanced features and software of the Ds family with unparalleled versatility through various tube element options. The pump is equipped with an IoT function, making the Ds4F the ultimate choice for precise metering and transfer applications.

**Performance and reliability**

The Ds4F has already proven its exceptional performance and reliability with skid builders and OEM customers in the water, wastewater and the chemical industries.

For more information contact your nearest Verder office. The Ds4F is at the forefront of pump technology.



**Integrated IoT functionality**

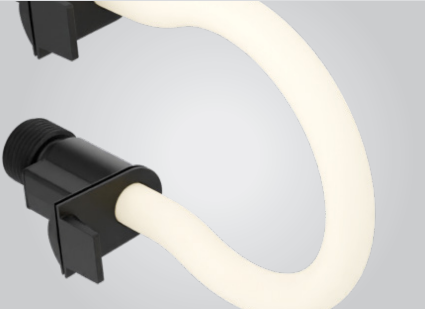
The pump is integrated with Verder IoT technology for versatile monitoring, making the Ds4F the ultimate choice for precise metering and transfer applications.

The Ds4F offers the customer the versatility to use the pump in applications up to 4 bar (60Psi) and flows as high as 240 l/hr (63gph). It comes standard 4-20mA (0-10V) and has latching as part of the external controls.



**Liquid versatility as a standard**

Liquid versatility is made possible with the options like Verderprene (FDA and NSF61) and Verderchem tube elements. The tube conditions are monitored by a leak sensor that will stop the pump in the event of a tube failure. Password security to ensures the safety and prevents unauthorized programming.



## Some of the key features

- 1 Ds4F pump
- 2 Tube element
- 3 Hydraulic tube kit
- 4 Rotor assembly

VERDERFLEX®

