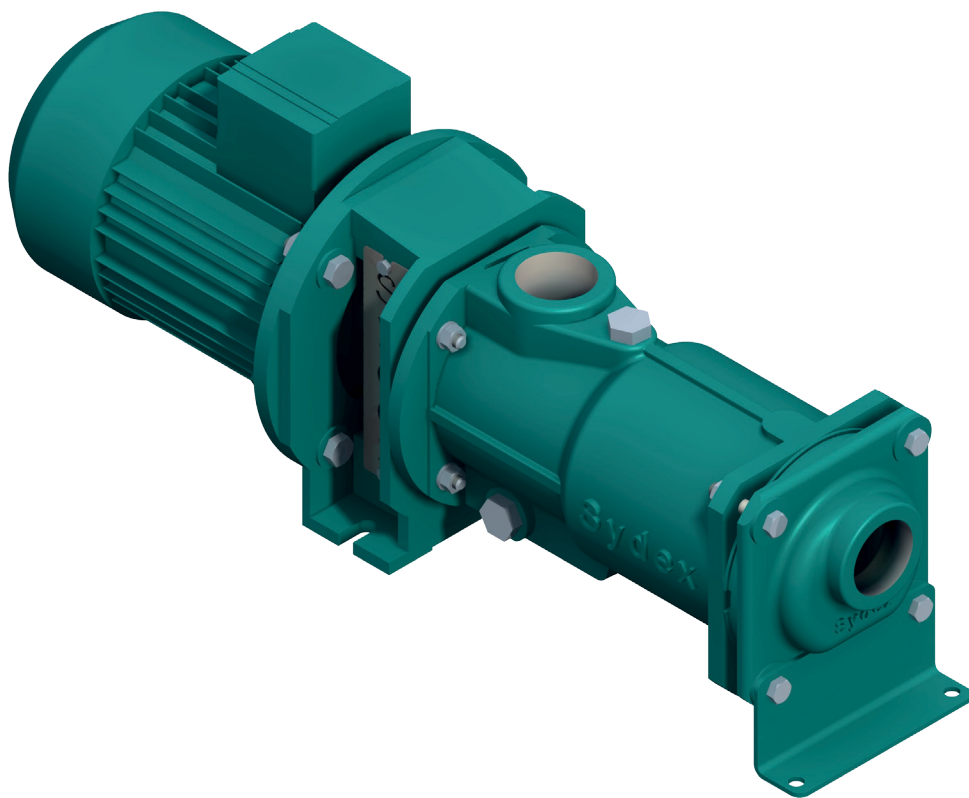




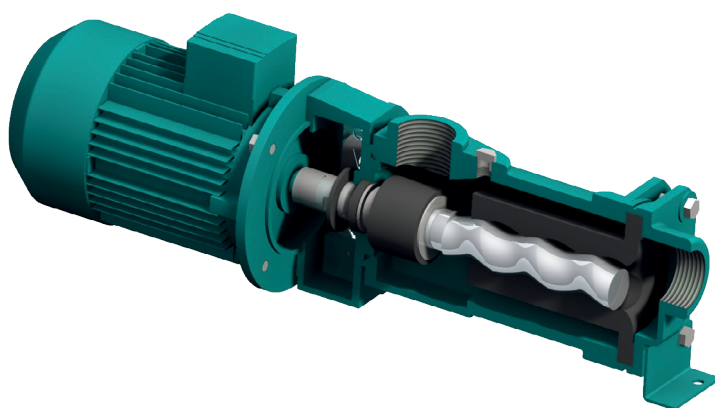
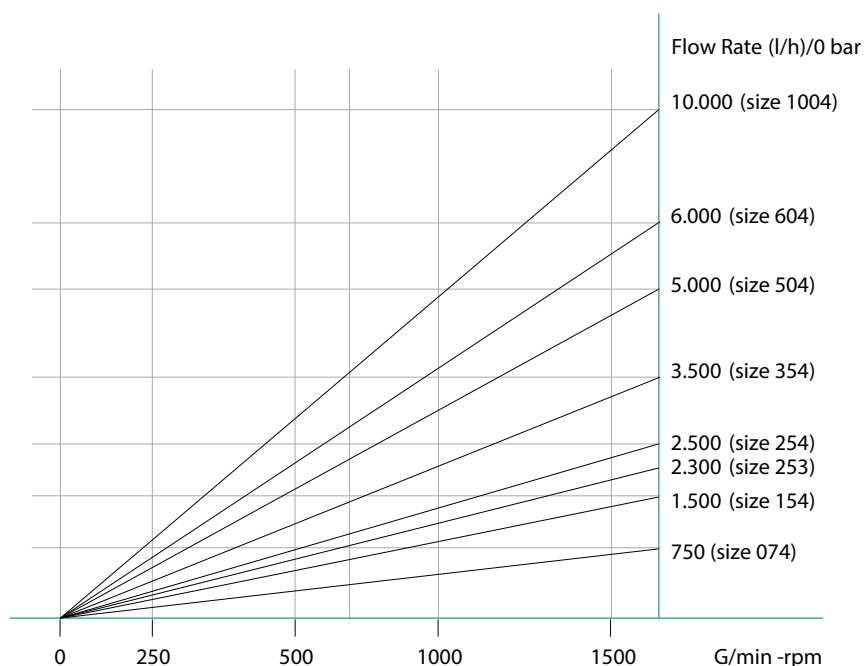
FM Range



PROGRESSING CAVITY PUMP
Italian Designed & Manufactured

Legendary Reliability

THEORETICAL PERFORMANCES



Range "FM"

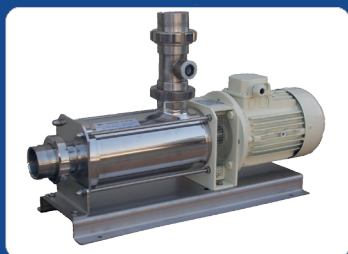
Compact and versatile, the FM range brings you all the advantages of progressing cavity pumps, in a small, compact and economical design.

Tested and proven in many applications:

- Wide range of flows, 20 up to 10,000 LPH
- High performance combined with efficient design
- Self priming ideal for suction lifts
- Lightweight and compact
- Low noise emission
- Non-pulsating reliable flow
- Extremely simple maintenance
- Low cost of ownership
- Different material combinations available to suit applications

Applications:

- Waste water treat (Polymers, waste, sludge, fluc-culants)
- Chemical industry (detergents, varnish, paints, inks, soaps)
- Buildings (Cements, Bentonite)
- Agrofood industry (Creams, emulsions, wine, olive oils)
- Energy (Hydrocarbons, coolant and cutting oils, acids)
- Drainage applications
- Sampling duties
- Abrasive slurries
- Ideal for OEM pump applications



SYDEX
pump



Sydex Srl - Via Lord Baden Powell, 24 - 36045 Lonigo (Vicenza) - ITALY
Tel. +39 0444 43 25 88 - Fax +39 0444 43 25 89
E-mail: info@sydexump.com - Website: www.sydexump.com

lobe

Danmark
Lobe ApS
Tlf. +45 7684 3484
Mail: sales@lobe.dk
www.lobe.dk

Norge
Lobe AS
Tlf. +47 6710 5000
Mail: sales@lobe.no
www.lobe.no