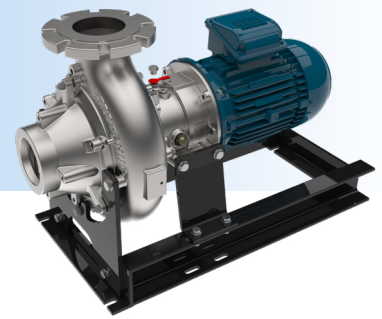


Verderhus Stainless Steel

HSB-100-100-A



Description

Verderhus stainless steel screw centrifugal pumps combine the best features of centrifugal and positive displacement pumps. They define a new standard for low head, high flow pumps. The Verderhus pumps have a large clearance screw impeller, which gently feeds product into the pump chamber. This allows the product to be efficiently transferred into the discharge line and allows for large solids to be easily pumped. The screw design impeller is ideal for high solid contents and viscous liquids. It produces a high efficiency, low NPSHr pump, lowering both energy usage and operational costs, generating a lower overall cost of ownership.

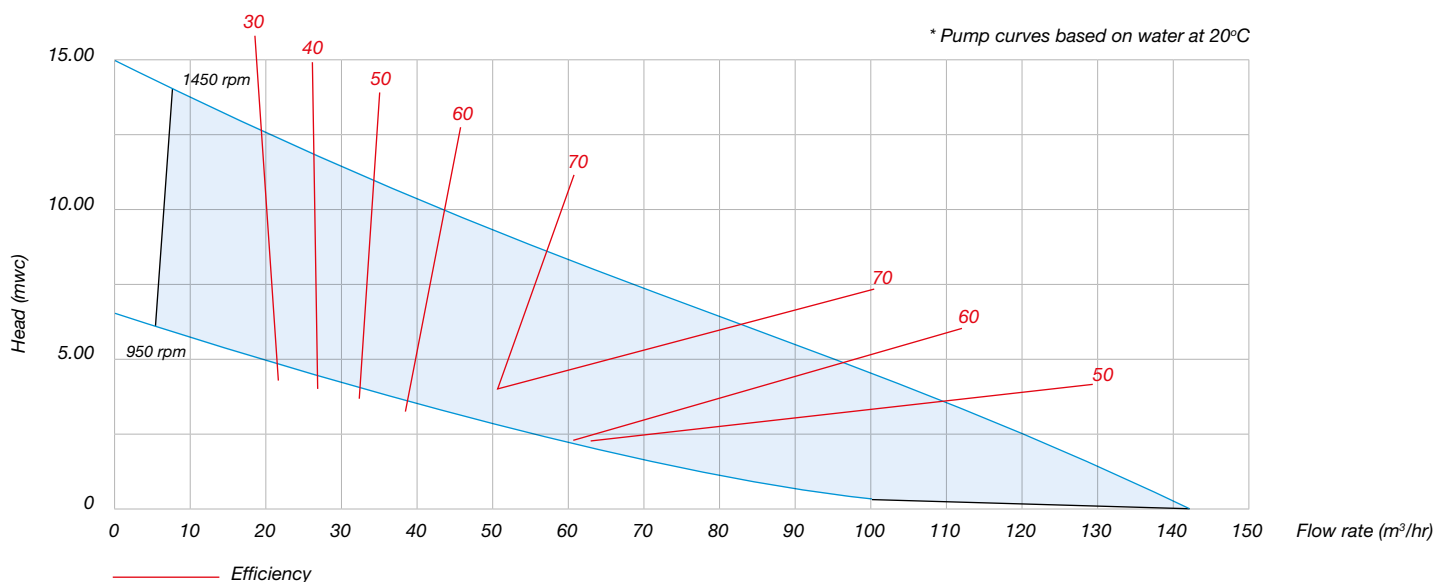
Features and benefits

- Large solid handling with <10% sludge, <30% slurry
- Gentle, low shear pumping, meaning lesser damage to the fluid
- Low energy use compared to other technologies
- Low abrasive wear meaning reduced maintenance costs
- Corrosion resistant stainless steel for aggressive chemical handling

Technical data

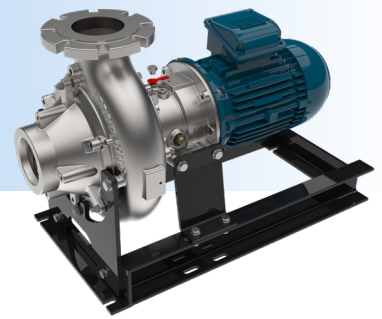
| | | | |
|-------------------------------|-----------------------|--------------------------|---------------------------|
| Ambient operating temperature | -5, 40 °C | Max viscosity | 3000 cP |
| Fluid temperature | -20, 100 °C | Maximum solid size | 80 mm |
| Maximum pump noise | up to 75 dB | Solid content percentage | Sludge: 10% - Slurry: 30% |
| Max. flows | 140 m ³ /h | Max. head | 14 mwc |

Performance curve



Verderhus Stainless Steel

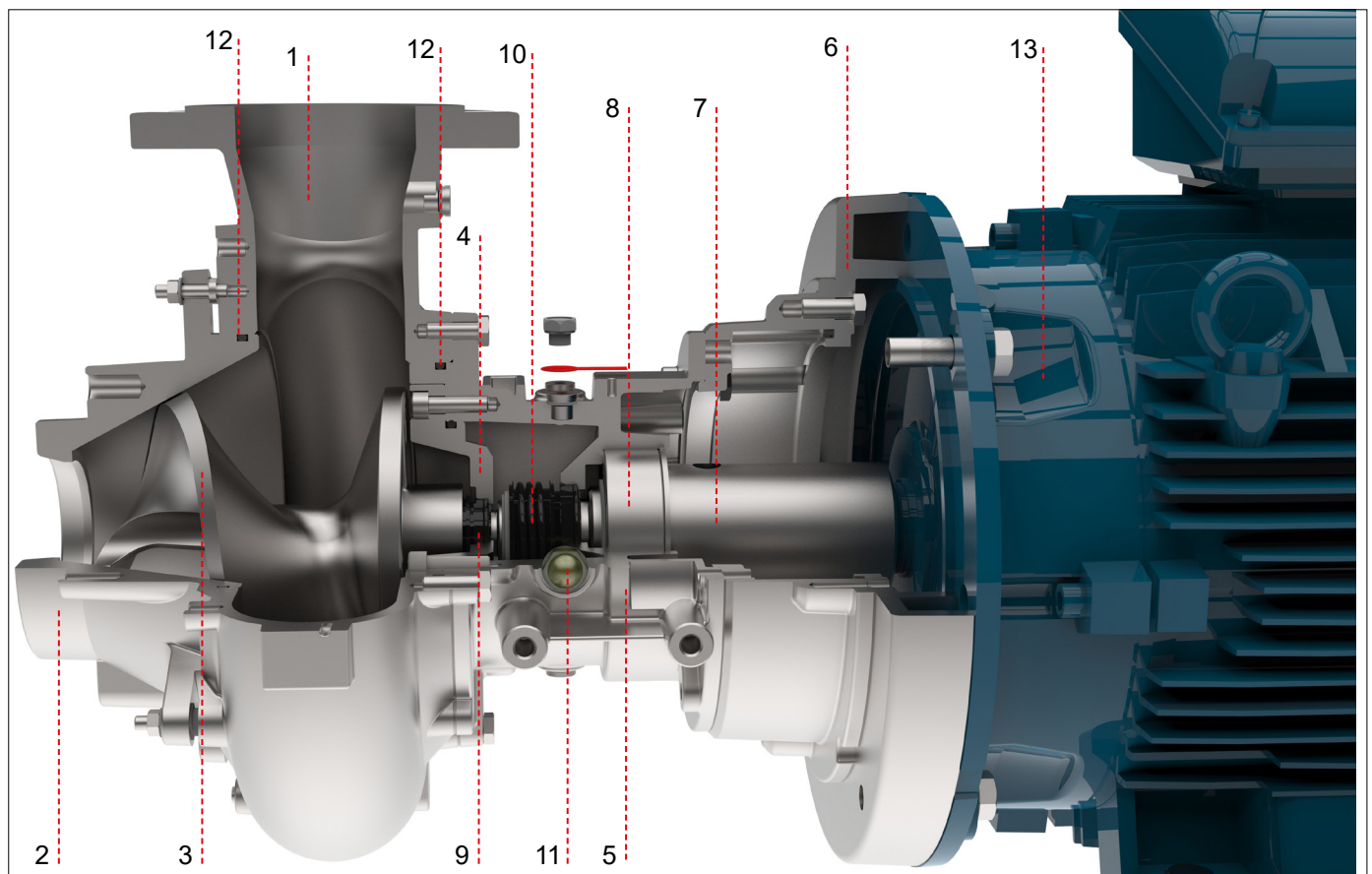
HSB-100-100-A



VERDERHUS®

| Item No. | Description | Standard Materials / Dimensions |
|----------|--|--|
| 1 | Impeller housing/Cone* Suction flange | Stainless Steel 1.4408 (316) (Nitrided) DN100 PN10 |
| | Discharge flange | DN100 PN10 |
| 2 | Intake Socket* | Stainless Steel 1.4408 (316) (Nitrided) |
| 3 | Impeller* | Stainless Steel 1.4408 (316) (Nitrided) |
| 4 | Cooling Flange* | Stainless Steel 1.4408 (316) (Nitrided) |
| 5 | Bearing housing* | Stainless Steel 1.4408 (316) (Nitrided) |
| 6 | Transition flange | Stainless Steel 1.4408 (316) |
| 7 | Drive shaft | Stainless Steel 1.4435 (AISI 316L) |
| 8 | Bearing | Single Row Deep Groove Ball Race-Sealed for Life |
| 9 | Mechanical seal-product side | Silicon Carbide/Silicon Carbide/VITON |
| 10 | Mechanical seal-motor side | Carbon/Ceramic/NBR |
| 11 | Oil Chamber | Industrial gear oil 150 |
| 12 | O-rings material | FPM |
| 13 | Motor options and overall pump weight (WEG W22 IE3 motors) | With IEC112 Motor: 134 Kg With IEC132 Motor: 190 Kg |
| | Mounting frame | Steel S275 JR |

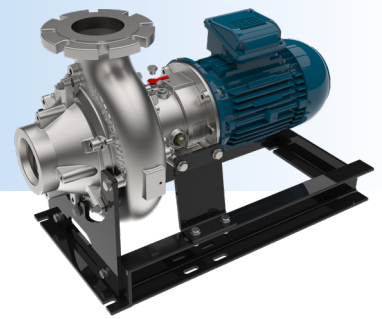
* Impeller housing, Intake socket, Impellers, Bearing housing and Cooling flange will now be Nitrided as standard to increase wear resistance and surface hardness.



Sectional view of Impeller Housing Assembly

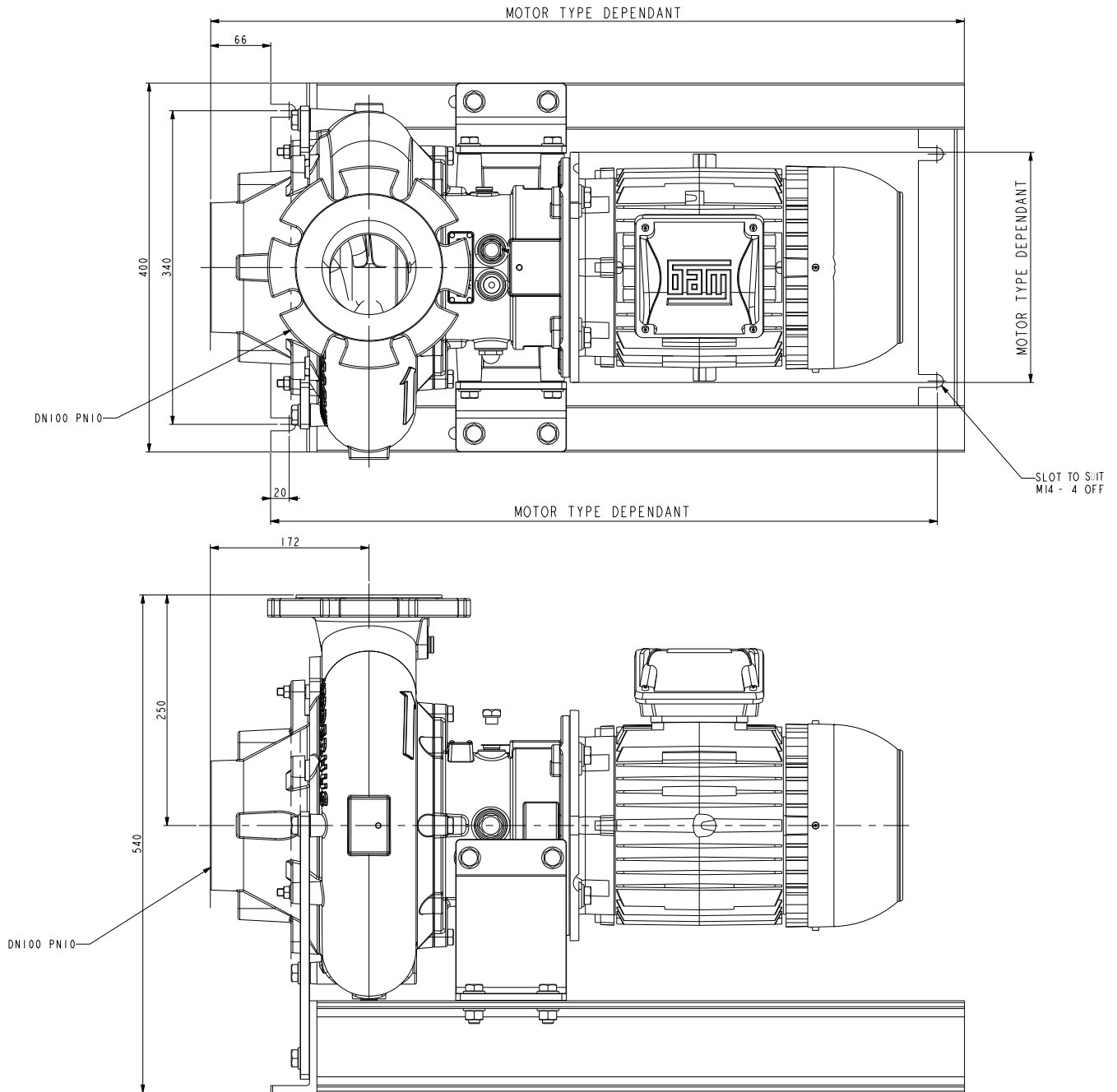
Verderhus Stainless Steel

HSB-100-100-B



VERDERHUS®

Dimensions



All dimensions are in mm.

All dimensions and weights are for guidance only.

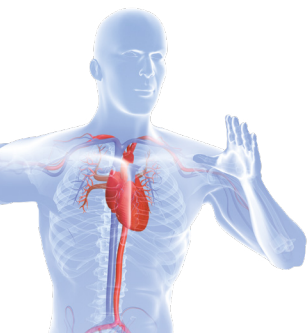
Your local supplier:

lobē

Danmark
Fabriksvej 13 - 15
DK 6580 Vamdrup
Tel: (+45) 76 84 34 84
web: www.lobe.dk

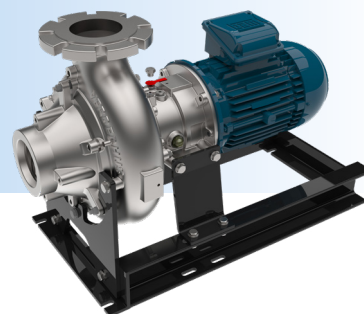
Norge
Slemmestad veien 416 A
NO 1390 Vollen
Tel: (+47) 92 02 16 66
web: www.lobe.dk

VERDER
passion for pumps



Verderhus Stainless Steel

HSB-100-100-B



VERDERHUS®

Description

Verderhus stainless steel screw centrifugal pumps combine the best features of centrifugal and positive displacement pumps. They define a new standard for low head, high flow pumps. The Verderhus pumps have a large clearance screw impeller, which gently feeds product into the pump chamber. This allows the product to be efficiently transferred into the discharge line and allows for large solids to be easily pumped. The screw design impeller is ideal for high solid contents and viscous liquids. It produces a high efficiency, low NPSHr pump, lowering both energy usage and operational costs, generating a lower overall cost of ownership.

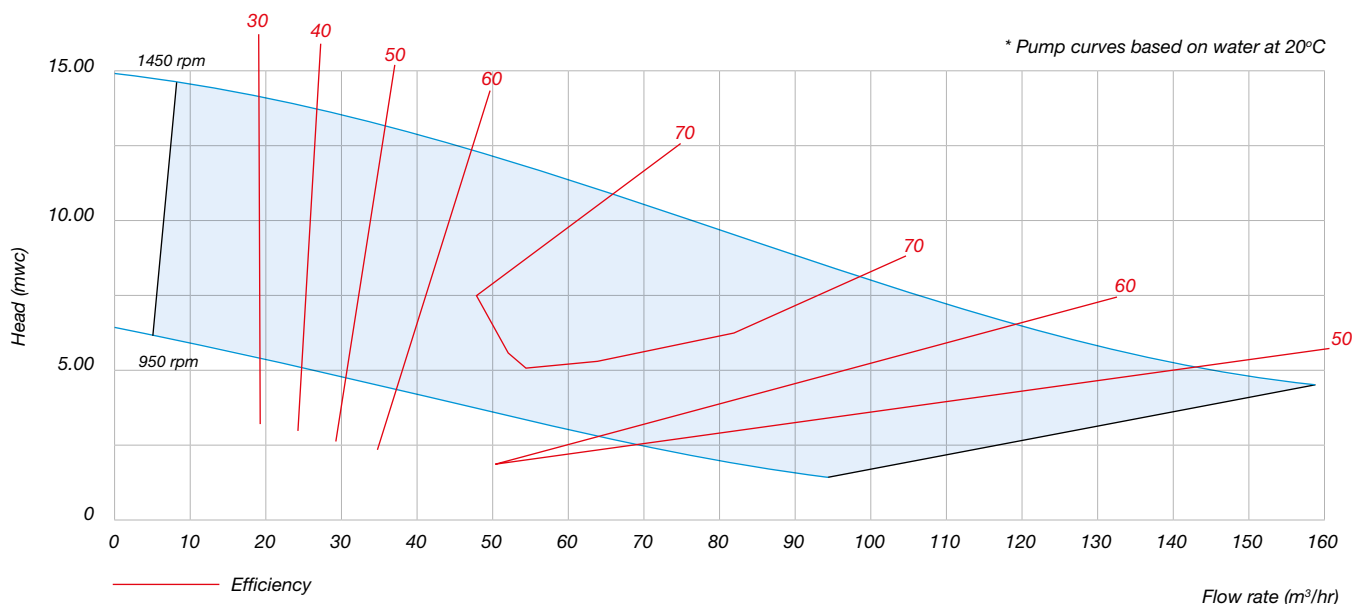
Features and benefits

- Large solid handling with <10% sludge, <30% slurry
- Gentle, low shear pumping, meaning lesser damage to the fluid
- Low energy use compared to other technologies
- Low abrasive wear meaning reduced maintenance costs
- Corrosion resistant stainless steel for aggressive chemical handling

Technical data

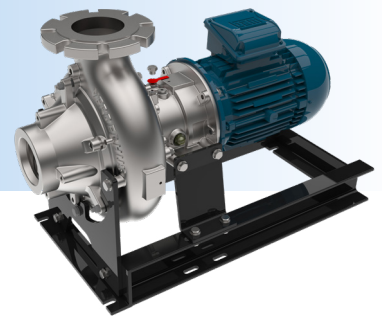
| | | | |
|-------------------------------|-----------------------|--------------------------|---------------------------|
| Ambient operating temperature | -5, 40 °C | Max viscosity | 3000 cP |
| Fluid temperature | -20, 100 °C | Maximum solid size | 80 mm |
| Maximum pump noise | up to 75 dB | Solid content percentage | Sludge: 10% - Slurry: 30% |
| Max. flows | 155 m ³ /h | Max. head | 14 mwc |

Performance curve



Verderhus Stainless Steel

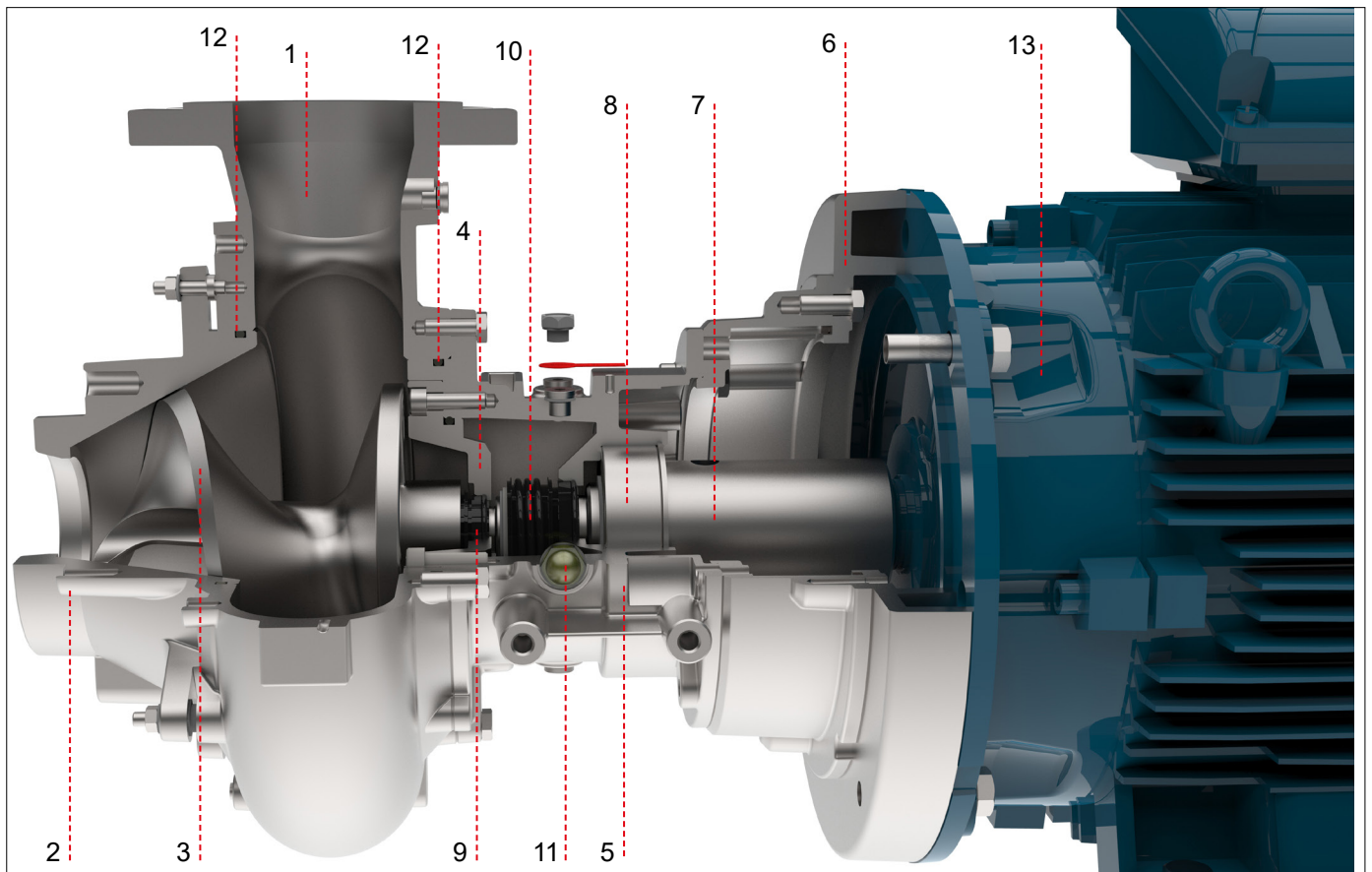
HSB-100-100-B



VERDERHUS®

| Item No. | Description | Standard Materials / Dimensions |
|----------|--|--|
| 1 | Impeller housing/Cone* | Stainless Steel 1.4408 (316) (Nitrided) |
| | Suction flange | DN100 PN10 |
| | Discharge flange | DN100 PN10 |
| 2 | Intake Socket* | Stainless Steel 1.4408 (316) (Nitrided) |
| 3 | Impeller* | Stainless Steel 1.4408 (316) (Nitrided) |
| 4 | Cooling Flange* | Stainless Steel 1.4408 (316) (Nitrided) |
| 5 | Bearing housing* | Stainless Steel 1.4408 (316) (Nitrided) |
| 6 | Transition flange | Stainless Steel 1.4408 (316) |
| 7 | Drive shaft | Stainless Steel 1.4435 (AISI 316L) |
| 8 | Bearing | Single Row Deep Groove Ball Race-Sealed for Life |
| 9 | Mechanical seal-product side | Silicon Carbide/Silicon Carbide/VITON |
| 10 | Mechanical seal-motor side | Carbon/Ceramic/NBR |
| 11 | Oil Chamber | Industrial gear oil 150 |
| 12 | O-rings material | FPM |
| 13 | Motor options and overall pump weight (WEG W22 IE3 motors) | With IEC112 Motor: 134 Kg With IEC132 Motor: 155 Kg |
| | Mounting frame | Steel S275 JR |

* Impeller housing, Intake socket, Impellers, Bearing housing and Cooling flange will now be Nitrided as standard to increase wear resistance and surface hardness.

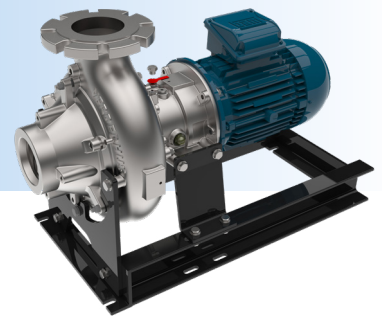


Sectional view of Impeller Housing Assembly



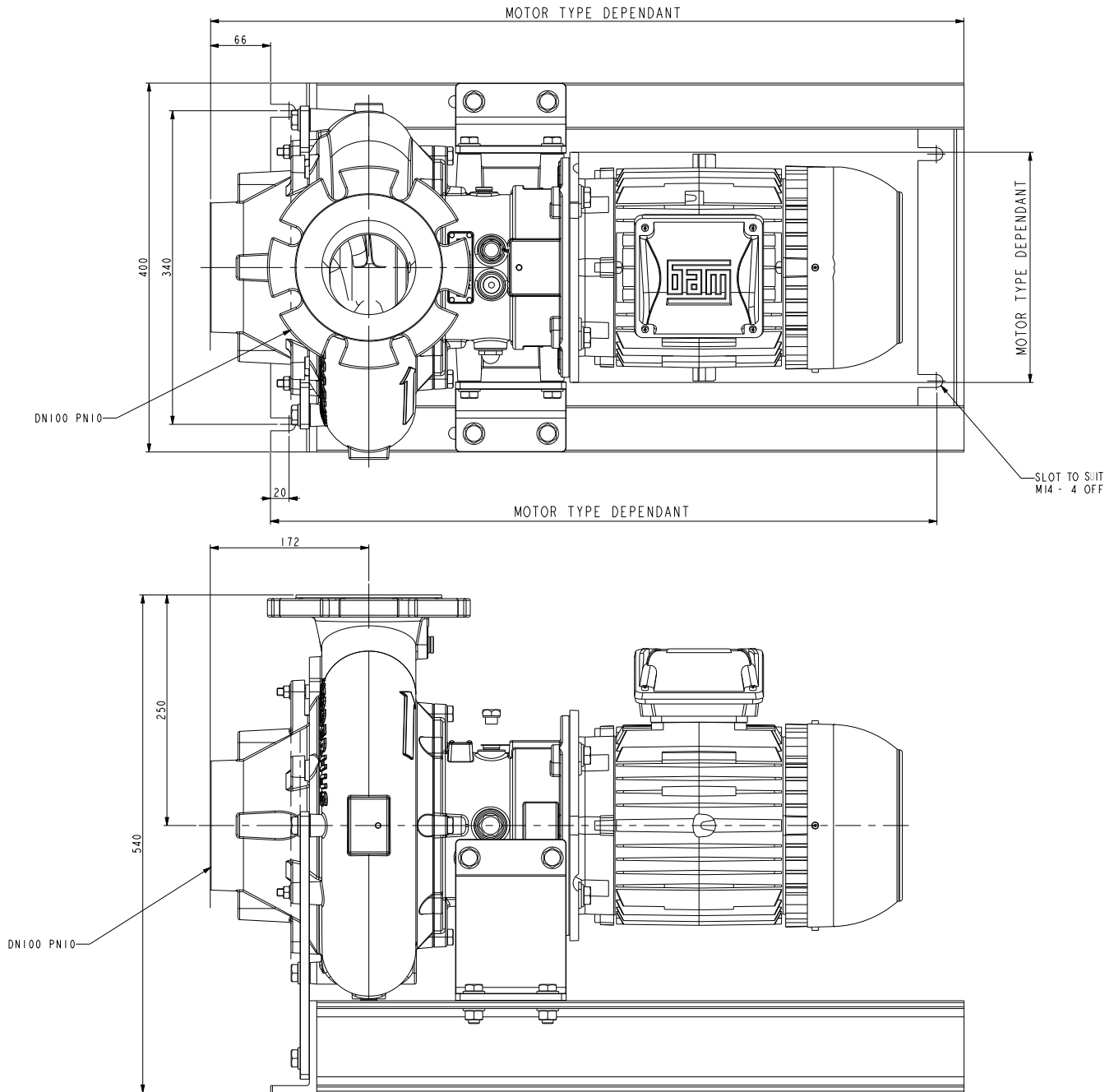
Verderhus Stainless Steel

HSB-100-100-B



VERDERHUS®

Dimensions



All dimensions are in mm.

All dimensions and weights are for guidance only.

Your local supplier:

lobē

Danmark
Fabriksvej 13 - 15
DK 6580 Vamdrup
Tel: (+45) 76 84 34 84
web: www.lobe.dk

Norge
Slemmestad veien 416 A
NO 1390 Vollen
Tel: (+47) 92 02 16 66
web: www.lobe.dk

VERDER
passion for pumps

